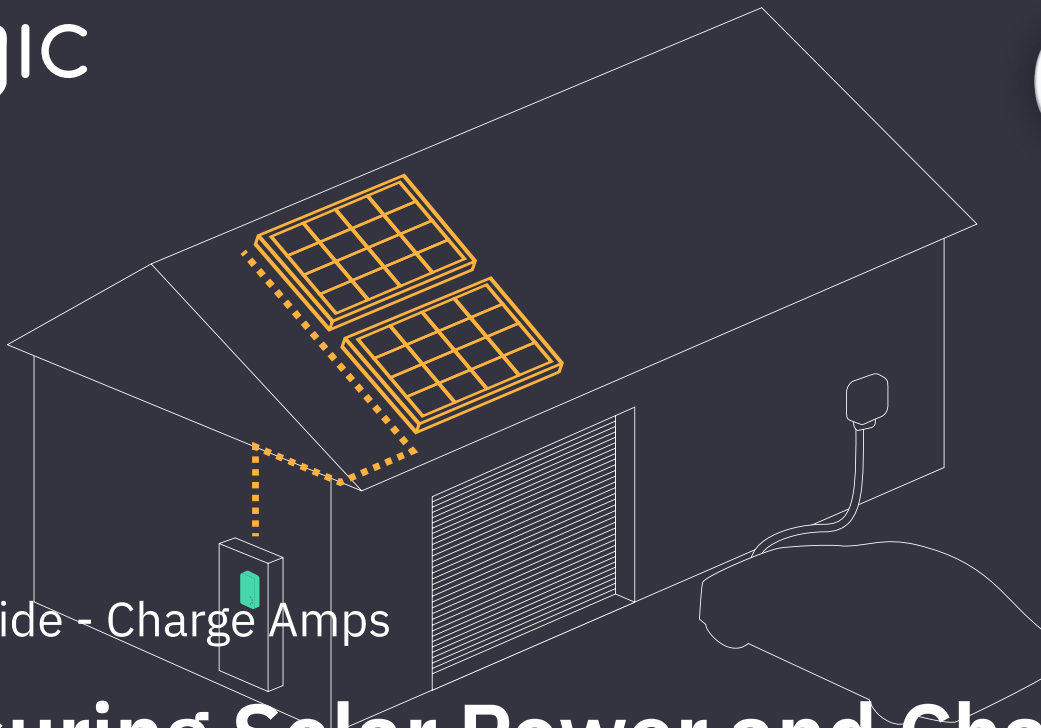




Halo / Dawn / Aura



Setup Guide - Charge Amps

Measuring Solar Power and Charging

TABLE OF CONTENTS

Solar and Green Charging configuration

Monitor Current sensors	1
Monitor one P1/RJ12	2

Monitor | Current sensors

Before you start:

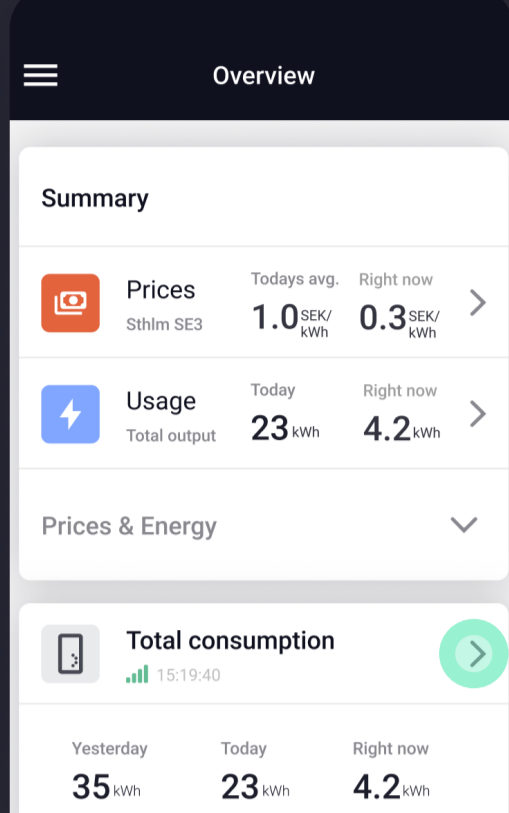


A Monitor must be installed and correctly configured in order to be able to measure total power consumption and solar power production (L1-L4).



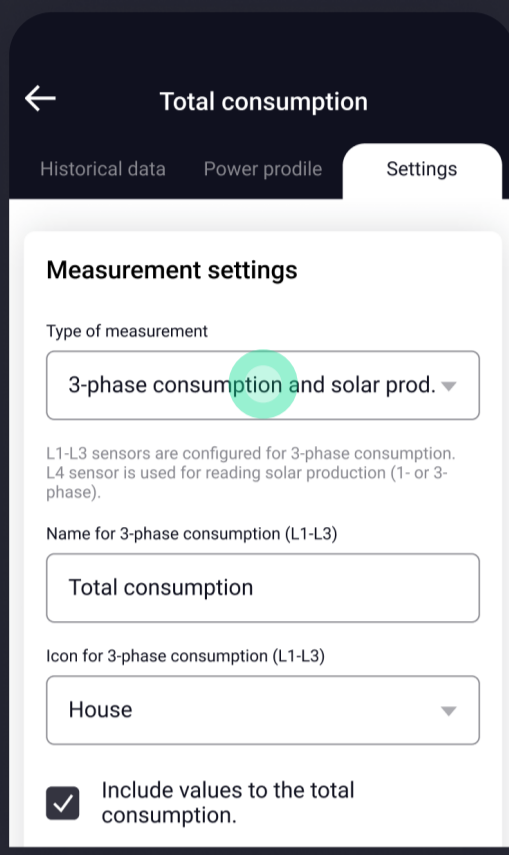
A Reporter must be set up correctly to enable Enegic to transmit power consumption data to Charge Amps. (See *Charge Amps Integration Guide: en.enegic.com/downloads.*)

1



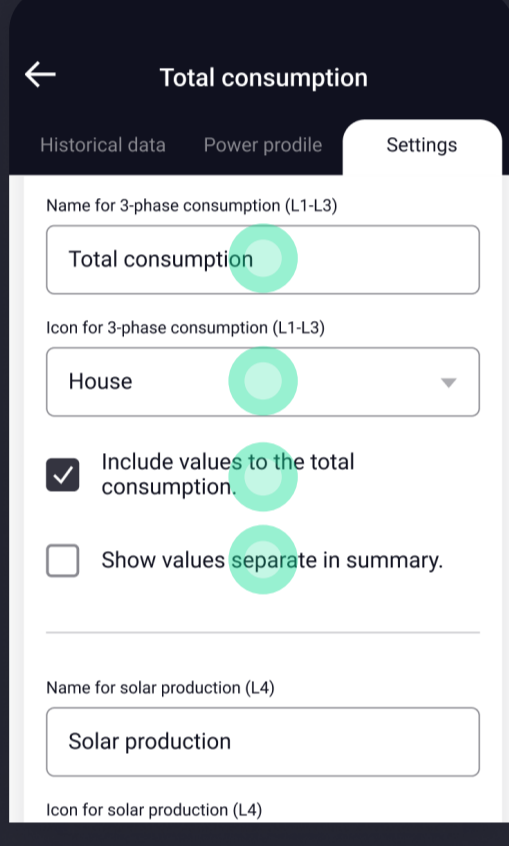
Go to Settings for the power measuring device (Monitor).

2



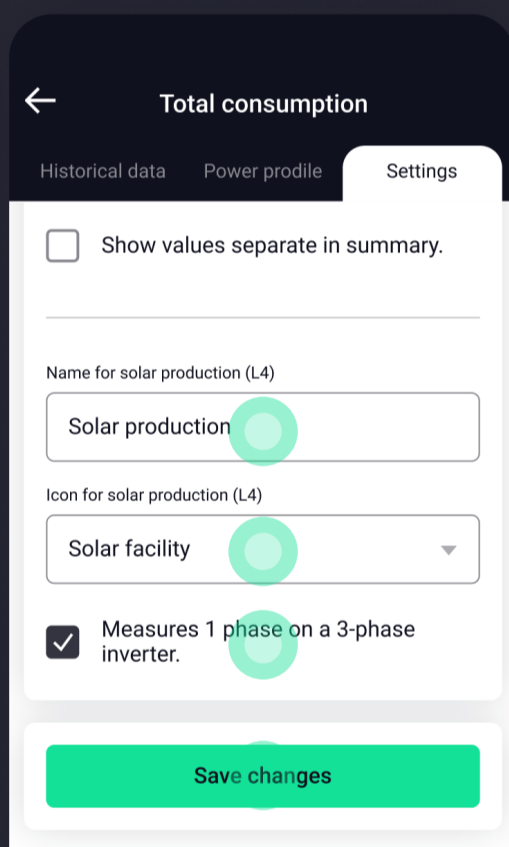
Select “3-phase consumption and solar production” as chosen type of measurement.

3



Select preferred settings for how you would like the total power consumption (L1-L3) to be displayed.

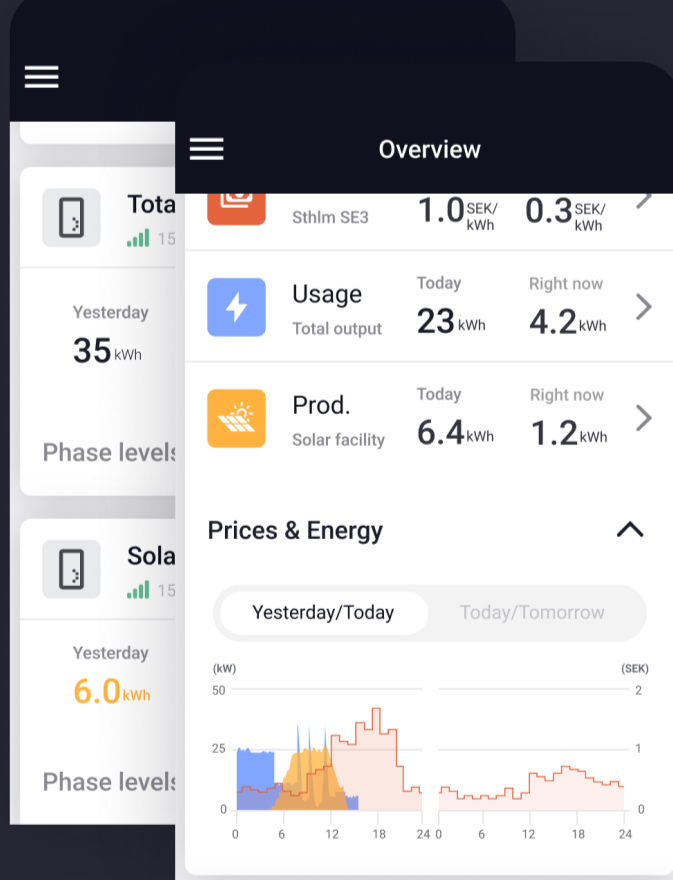
4



Select preferred settings for how you would like the solar power production (L4) to be displayed.

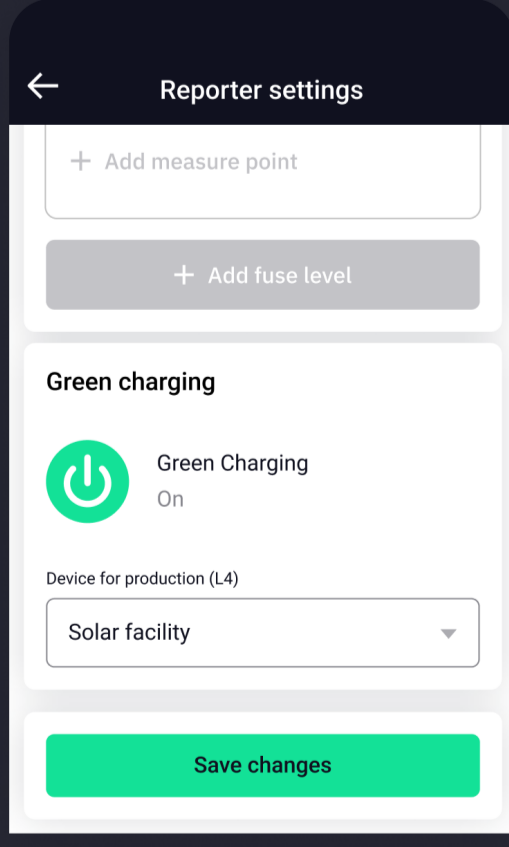
Press ‘Save changes’.

5



The **Total power consumption** and **Solar power production** are now displayed in the Overview.

6



Go to Settings for the Charge Amps Reporter.

Activate Green Charging and select the correct Monitor as ‘Device for production (L4)’.

7



The installation is now configured to measure solar power production and enable Green Charging.

The solar power production is now displayed in the app and the charging box(es) in the installation will use Green Charging. Read more about Green Charging here:

<https://www.chargeamps.com/article/how-charge-amps-green-charging-works/>

Monitor One | P1/RJ12

Before you start:

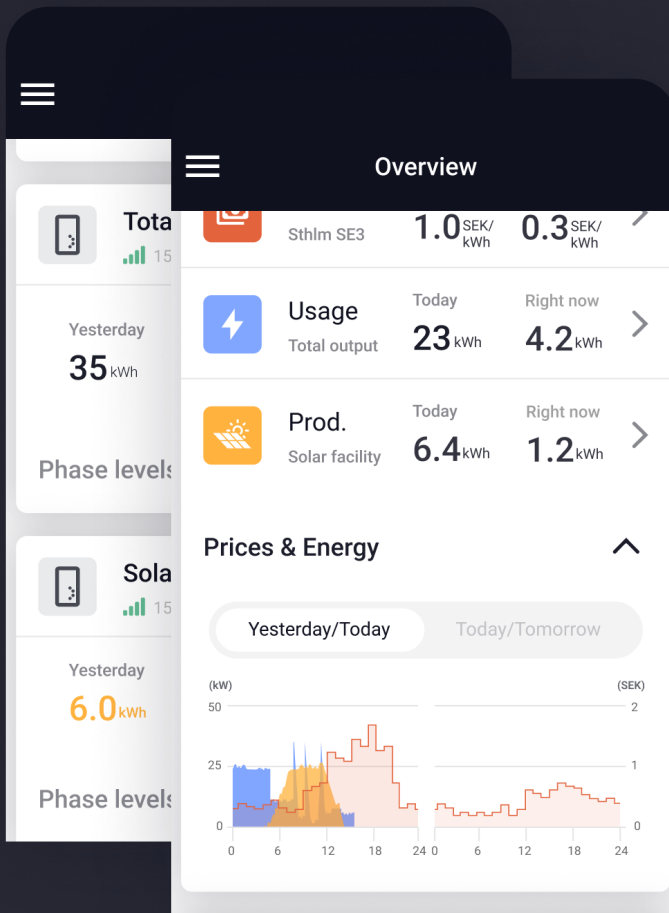


A Monitor One must be installed and configured to be able to measure total power consumption and solar power production through the electrical meter (P1/RJ12).



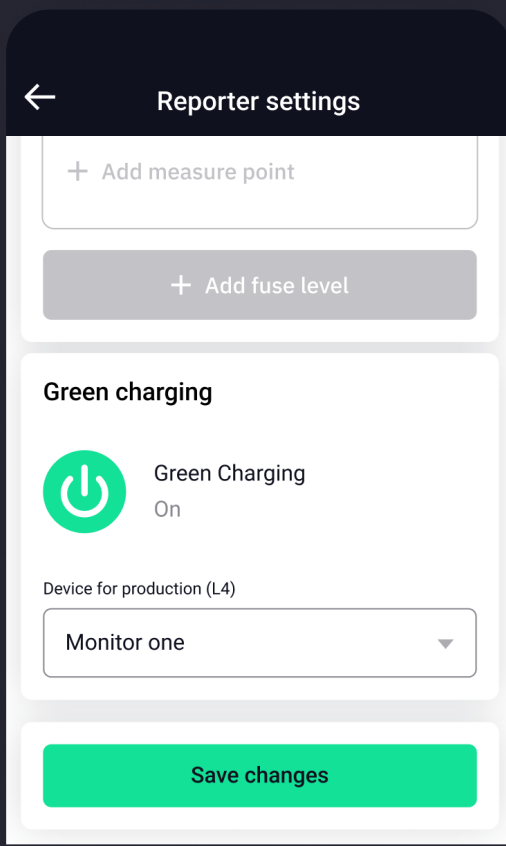
A Reporter must be set up correctly to enable Enegic to transmit power consumption data to Charge Amps. (See *Charge Amps integration guide: en.enegic.com/downloads.*)

1



The **Total power consumption** and **Solar power production** are displayed as Bought/Sold energy in the Overview.

2



Go to Settings for the Charge Amps Reporter.

Activate Green Charging and select the Monitor One as 'Device for production (L4)'.

3



The installation is now configured to measure solar power production and enable Green Charging.

The solar power production is now displayed in the app and the charging box(es) in the installation will use Green Charging. Read more about Green Charging here:

<https://www.chargeamps.com/article/how-charge-amps-green-charging-works/>